

**Catalog No. BMR 00308**

**Mouse monoclonal antibody**

**Anti-Human VAX2**

**Formulation**

Mouse monoclonal anti-human **VAX2** antibody in PBS (3.0 mM KCl, 1.5 mM KH<sub>2</sub>PO<sub>4</sub>, 140 mM NaCl, 8.0 mM Na<sub>2</sub>HPO<sub>4</sub> (pH 7.4)) containing 1% bovine serum albumin (BSA) and 0.05% sodium azide (NaN<sub>3</sub>).

**Antibody concentration**

100 µg/ml (1.0 ml)

**Storage**

Store at 2-8°C for up to one year.  
We recommend storing at -20°C for long-term storage.  
Avoid repeat freezing and thawing cycles.

**Preparation**

This antibody was purified using protein G column chromatography from culture supernatant of hybridoma cultured in a medium containing bovine IgG-depleted (approximately 95%) fetal bovine serum.

**Sterility**

Filtered through a 0.22 µm membrane.

**Applications**

Please visit our website at <http://www.biomatrix.co.jp/>.

**Disposal**

This antibody solution contains sodium azide (NaN<sub>3</sub>) as a preservative. There is a potential hazard that NaN<sub>3</sub> reacts with copper or lead to produce an explosive compound. For safe disposal, the vial has to be washed thoroughly with water.

**Safety warnings and precautions**

Caution must be taken to avoid contact with skin or eyes. In such a case, rinse thoroughly at once with water. Do not ingest, inhale, or swallow. Seek medical attention immediately.

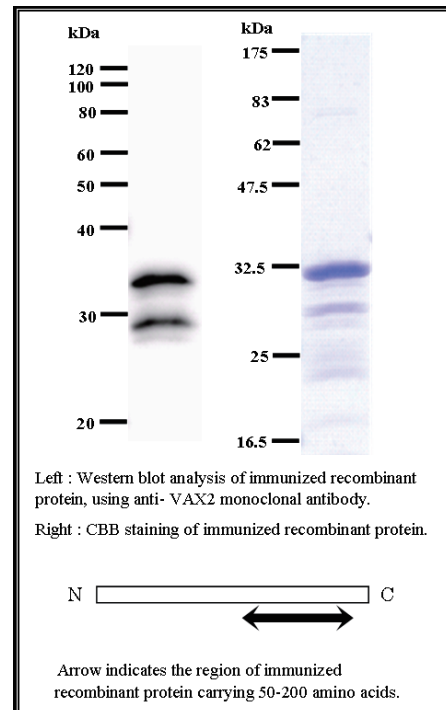
Wear appropriate protective clothing such as laboratory overalls, safety glasses and gloves.

It is strongly advised that this product should be handled by people who have been well trained in laboratory techniques and that it is handled with care pursuant to the principles of good laboratory practice.

All chemicals are deemed potentially harmful.

The vial is prone to fall over. Use caution, especially when the lid is off.

**Lot No. VAX2A8F12-1**  
**Clone No. VAX2A8F12**  
**Antibody class : IgG1**  
**Immunogen : Recombinant**



Catalog No. **BMR00308**

## Mouse monoclonal antibody      **Anti-Human VAX2**

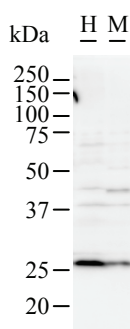
### ■ Background

VAX2 gene was named based on its high sequence similarity to VAX1 gene and is almost exclusively expressed in the ventral portion of the retina during development. It may play an important role in morphogenetic processes underlying the correct development of the eye, particularly in the establishment of a correct dorsoventral pattern. [NCBI Entrez Gene Summary]

### ■ Recommended condition

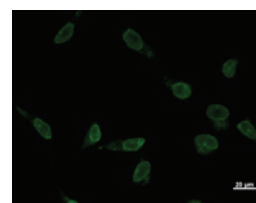
WB: 0.2-2 µg/ml    ICC: 2-100 µg/ml

### ■ Application



Detection of VAX2 by Western blot.  
 Samples: Whole cell lysate from human A2058 (H, 50 µg) and mouse NIH3T3 (M, 50 µg) cells. [Lot No. VAX2A8F12-1]

Predicted molecular weight: 30 kDa



Immunostaining analysis in HeLa cells. HeLa cells were fixed with 4% paraformaldehyde and permeabilized with 0.1% Triton X-100 in PBS. The cells were immunostained with anti-VAX2 mAb. [Lot No. VAX2A8F12-1]